

Human TREM2 Protein

Cat. No. TRM-HM102

Description

Source	Recombinant Human TREM2 Protein is expressed from HEK293 with His tag at the C-Terminus. It contains His19-Ser174.
Accession	Q9NZC2-1
Molecular Weight	The protein has a predicted MW of 18.5 kDa. Due to glycosylation, the protein migrates to 28-40 kDa based on Tris-Bis PAGE result.
Endotoxin	Less than 1EU per µg by the LAL method.
Purity	> 95% as determined by Tris-Bis PAGE

Formulation and Storage

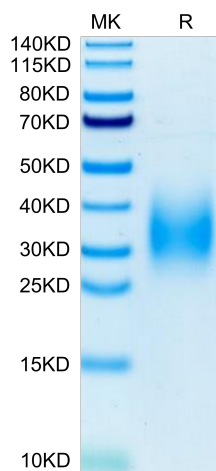
Formulation	Lyophilized from 0.22µm filtered solution in PBS (pH 7.4). Normally 8% trehalose is added as protectant before lyophilization.
Reconstitution	Centrifuge the tube before opening. Reconstituting to a concentration more than 100 µg/ml is recommended. Dissolve the lyophilized protein in distilled water.
Storage	-20 to -80°C for 12 months as supplied from date of receipt. -20 to -80°C for 3-6 months in unopened state after reconstitution. 2-8°C for 2-7 days after reconstitution. Recommend to aliquot the protein into smaller quantities for optimal storage. Please minimize freeze-thaw cycles.

Background

TREM-2 (Triggering Receptor Expressed on Myeloid cells-2) is a 35 kDa type I transmembrane member of the TREM family and Ig superfamily. Mature human TREM-2 consists of a 156 amino acid (aa) extracellular domain (ECD) with one V-type Ig-like domain, a 21 aa transmembrane (TM) domain, and a 35 aa cytoplasmic tail. TREM-2 forms a receptor signaling complex with TYROBP which mediates signaling and cell activation following ligand binding (PubMed:10799849). Acts as a receptor for amyloid-beta protein 42, a cleavage product of the amyloid-beta precursor protein APP, and mediates its uptake and degradation by microglia.

Assay Data

Tris-Bis PAGE



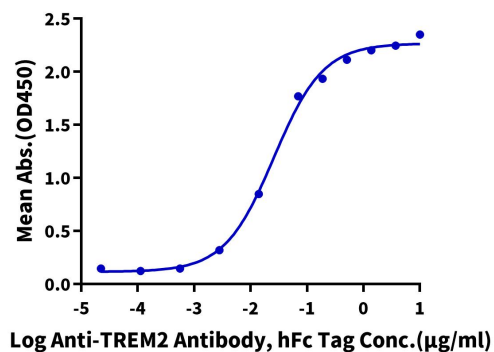
Human TREM2 on Tris-Bis PAGE under reduced condition. The purity is greater than 95%.

ELISA Data

Assay Data

Human TREM2, His Tag ELISA

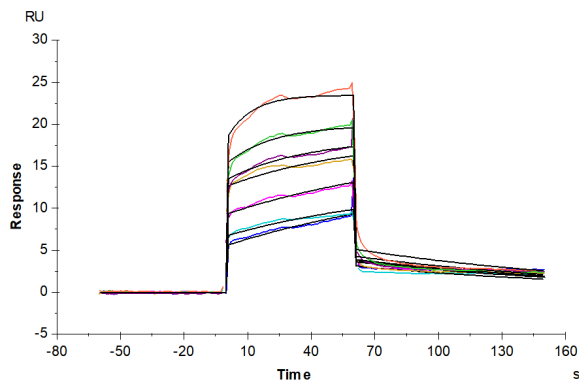
0.1µg Human TREM2, His Tag Per Well



Immobilized Human TREM2, His Tag at 1µg/ml (100µl/well) on the plate. Dose response curve for Anti-TREM2 Antibody, hFc Tag with the EC50 of 2.6ng/ml determined by ELISA (QC Test).

Assay Data

SPR Data



Human TREM2, His Tag captured on CM5 Chip via anti-his antibody can bind Human APOE3, hFc Tag with an affinity constant of 0.41 μM as determined in SPR assay (Biacore T200).